



**ELPLAST+**

MORE THAN  
**30 YEARS**  
OF EXPERIENCE



**PAS 1075**

PIPES MONO SPECJAL  
PE 100 RC



Certificate issued by TÜVRheinland®

## PRODUCT CATALOGUE

WATER-SUPPLY NETWORKS,  
PRESSURE SEWAGE SYSTEMS,  
NATURAL-GAS SYSTEMS

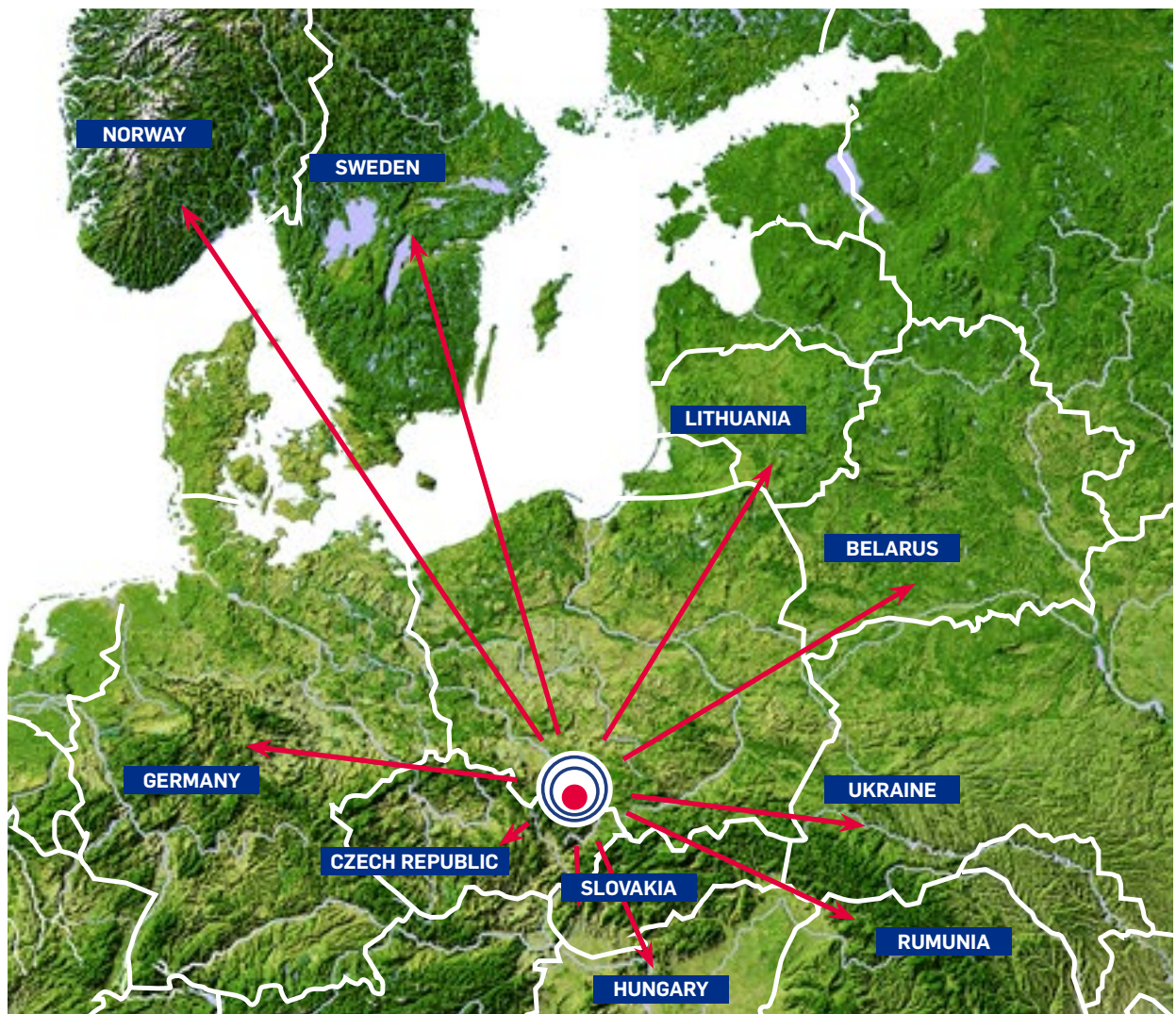
VICTAULIC  
FITTINGS AND  
COUPLINGS

SEWER MANHOLES  
& WATER-METER  
CHAMBERS

TELECOMMUNICATIONS  
& POWER INDUSTRY

HYDRAULIC HANDLING,  
SPORTS & RECREATION

**ELPLAST+** is a dynamic Polish manufacturing business and a family company, with over 30 years' professional experience in the production of piping, fittings, manholes, and chambers from plastic materials.



## PIPES

water and sewage pipes - MONO Special	4
water and sewage pipes - DUO Special	5
culvert, outer casing, telecommunication and floor pipes	6

## WATER METRE WELLS

DN 400 wells	8
DN 500 wells	10
DN 600 wells	12
DN 800 wells	14
DN 1000, DN1000/1200 wells	16

## TELECOMMUNICATIONS

SKO-1-PE well	18
SKO-2/4-PE well	20
connector containers	22
universal containers	26
micro connector container	28
asortyment powiązany	30

## HYDROTRANSPORT

platforms and PE pipes	31
floating modular work platforms	32

## SPORTS & RECREATION

modular floating docks	33
------------------------	----

## MONO Special - water and sewerage pipes

PE100/PE100RC	PN 6	PN 8	PN 10	PN 12,5	PN 16	PN 20	PN 25
RANGE DIMENSIONS	SDR 26	SDR 21	SDR 17	SDR 13,6	SDR 11	SDR 9	SDR 7,4
NOMINAL EXTERNAL DIAMETER dn [mm]	NOMINAL WALL THICKNESS en [mm]						
16	-	-	-	-	-	2.0	2.3
20	-	-	-	-	2.0	2.3	3.0
25	-	-	-	2.0	2.3	3.0	3.5
32	-	-	2.0	2.4	3.0	3.6	4.4
40	-	2.0	2.4	3.0	3.7	4.5	5.5
50	2.0	2.4	3.0	3.7	4.6	5.6	6.9
63	2.5	3.0	3.8	4.7	5.8	7.1	8.6
75	2.9	3.6	4.5	5.6	6.8	8.4	10.3
90	3.5	4.3	5.4	6.7	8.2	10.1	12.3
110	4.2	5.3	6.6	8.1	10.0	12.3	15.1
125	4.8	6.0	7.4	9.2	11.4	14.0	17.1
140	5.4	6.7	8.3	10.3	12.7	15.7	19.2
160	6.2	7.7	9.5	11.8	14.6	17.9	21.9
180	6.9	8.6	10.7	13.3	16.4	20.1	24.6
200	7.7	9.6	11.9	14.7	18.2	22.4	27.4
225	8.6	10.8	13.4	16.6	20.5	25.2	30.8
250	9.6	11.9	14.8	18.4	22.7	27.9	34.2
280	10.7	13.4	16.6	20.6	25.4	31.3	38.3
315	12.1	15.0	18.7	23.2	28.6	35.2	43.1
355	13.6	16.9	21.1	26.1	32.2	39.7	48.5
400	15.3	19.1	23.7	29.4	36.3	44.7	54.7
450			26.7		40.9		
500			29.7		45.4		
560			33.2		50.8		
630			37.4		57.2		

All sizes are available in the following materials:

- PE100
- PE100RC

-  MonoSpecial 1 - **PAS 1075** TYPE 1 - 1 layer available
-  MonoSpecial 2 - **PAS 1075** TYPE 2 - 2 layer available
-  MonoSpecial 3 - **PAS 1075** TYPE 2 - 3 layer available

### Warning:

Pipe nominal dimensions according to PN-EN 12201-2+A1:2013-12 -  
Piping system parameters:  
PN - nominal pressure in [bar]  
SDR=dn/en - standard dimension ratio



**PAS 1075**

PIPES MONO SPECJAL  
PE 100 RC

★ ★ ★  
Certificate issued by TÜVRheinland®



## DUO Special - water and sewerage pipes

PE 100/PE100RC		PN 10	PN 16
RANGE DIMENSIONS		SDR 17	SDR 11
PROTECTIVE ARMOUR EXTERNAL DIAMETER	NOMINAL EXTERNAL DIAMETER	WALL THICKNESS	
DN [mm]		en [mm]	
96	90	5.4	8.2
116	110	6.6	10.0
131	125	7.4	11.4
146	140	8.3	12.7
166	160	9.5	14.6
186	180	10.7	16.4
206	200	11.9	18.2
232	225	13.4	20.5
258	250	14.8	22.7
289	280	16.6	25.4
325	315	18.7	28.6
366	355	21.1	32.2
413	400	23.7	36.3

All sizes are available in the following materials:

- PE100
- PE100RC

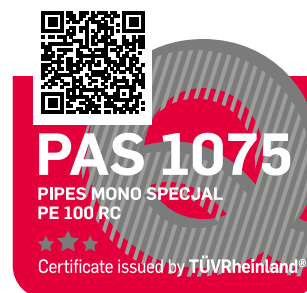
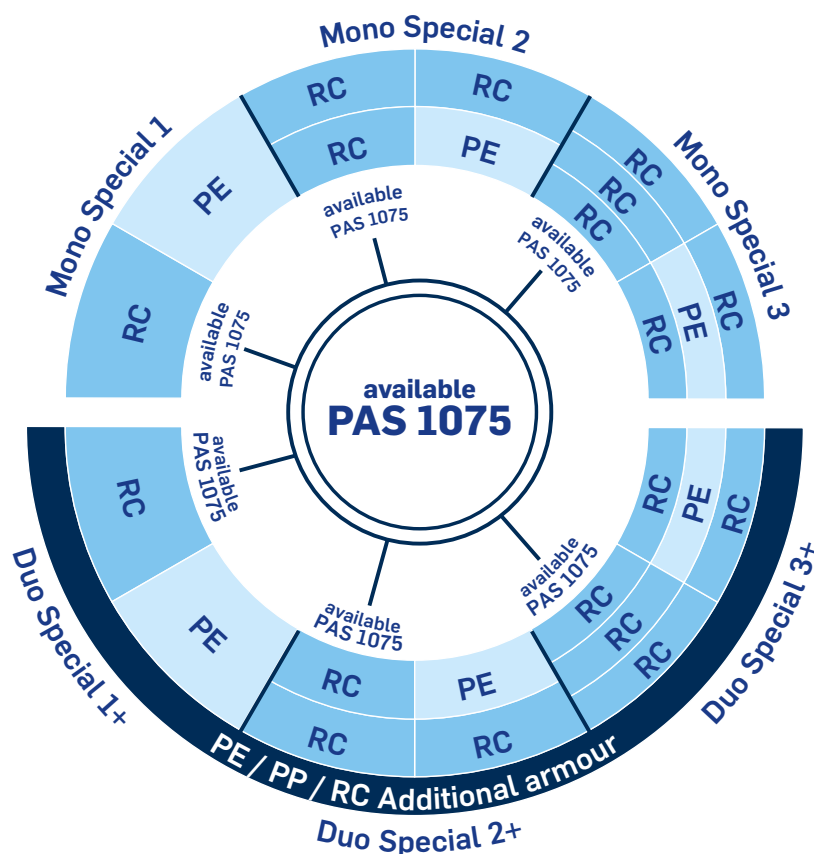
We can produce **PAS 1075** certified pipes



Duo Special 1+ - **PAS 1075** TYP 3 - 1 layer available

Duo Special 2+ - **PAS 1075** TYP 3 - 2 layer available

Duo Special 3+ - **PAS 1075** TYP 3 - 3 layer available



# PIPES

---

## CULVERT, OUTER CASING, TELECOMMUNICATION AND FLOOR PIPES

### CULVERT PIPES

---

For guided boring or ramming as culverts to be used at points where cable pipes cross:

- other utility installations
- roads, waterways
- railways and in other similar conditions

### OUTER CASING PIPES

---

For preinsulating (thermal heating) pipes and alike.

### TELECOMMUNICATION PIPES

---

Outer casing pipes for cable protection

### FLOOR HEATING

---



## OUTER CASING PIPES

For preinsulating (thermal heating) pipes and alike.

### PEHD = HDPE outer casings for preinsulation

NOMINAL EXTERNAL DIAMETER	NOMINAL WALL THICKNESS	NOMINAL INTERNAL DIAMETER
dn	en	dw
[mm]		
75	3,0	69,0
90	3,0	84,0
110	3,0	104,0
125	3,0	119,0
140	3,0	134,0
160	3,0	154,0
180	3,0	174,0
200	3,2	193,6
225	3,4	218,2
250	3,6	242,8
280	3,9	272,2
315	4,1	306,8
355	4,5	346,0
400	4,8	390,4
450	5,2	439,6
500	5,6	488,8
560	6,0	548,0
630	6,6	616,8

## TELECOMMUNICATION PIPES

Outer casing pipes for cable protection

### Telecommunication, RHDPE outer casing, RHDPE wpr outer casing pipes

DIMENSIONS
DIAMETER X WALL THICKNESS [mm]
25 x 2,0 *
25 x 2,3 *
32 x 2,0 *
32 x 2,9
40 x 2,9 *
40 x 3,7
50 x 4,6

## CULVERT PIPES

For guided boring or ramming as culverts to be used at points where cable pipes cross:

- other utility installations
- troads, waterwaysi
- railways and in other similar conditions.

### RHDPEp culvert pipes

DIMENSIONS	
DIAMETER X WALL THICKNESS [mm]	
SDR 17	SDR 11
63 x 3,8	63 x 5,8
75 x 4,5	75 x 6,8
90 x 5,4	90 x 8,2
110 x 6,6	110 x 10
125 x 7,4	125 x 11,4
140 x 8,3	140 x 12,7
160 x 9,5	160 x 14,6
180 x 10,7	180 x 16,4
200 x 11,9	200 x 18,2
225 x 13,4	225 x 20,5
250 x 14,8	250 x 22,7
280 x 16,6	280 x 25,4
315 x 18,7	315 x 28,6
355 x 21,1	355 x 32,2
400 x 23,7	400 x 36,3
450 x 26,7	450 x 40,9
500 x 29,7	500 x 45,4
560 x 33,2	560 x 50,8
630 x 37,4	630 x 57,2

## FLOOR HEATING

NOMINAL EXTERNAL DIAMETER	NOMINAL WALL THICKNES
dn	en
[mm]	
16	3,0
17	3,0
18	3,0
20	3,0

Available options:

- with air barrier
- without air barrier

# WATER METER CHAMBERS

## DN 400

for installation at the connection points of individual customers

### INTENDED USE

- in air temperatures up to - 30°C above ground

### ADVANTAGES

- simple construction
- easy access to water meter
- reading accessible from ground level
- insulated body and space above the meter
- compact diameter that does not require deep trenches
- a complete system for installing water meters

### ASSOCIATED PRODUCTS

### CODE

DN 400 lockable cover

CDN400-L

DN 400 cover without lock (additional seal not needed)

CDN400

inlet connector pipes from 25 to 40

SIC:



PREMIUM chamber interior

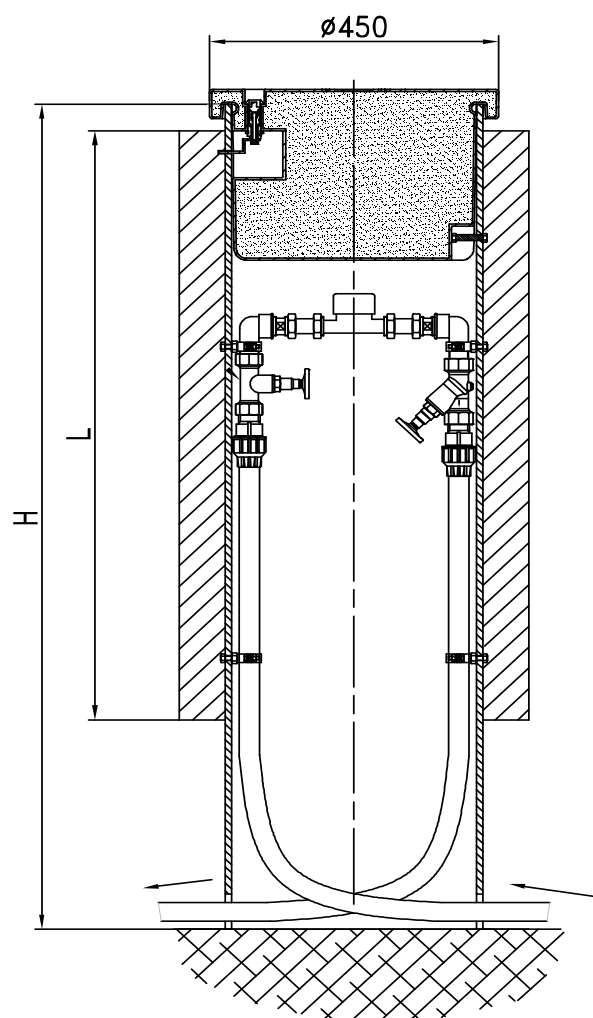


STANDARD chamber interior



## DN 400 H=1400 chamber

VERSION CODE/HEIGHT	Body DN4-14B	Standard DN4-14ST	Standard with lock DN4-14STL	Premium DN4-14P
INSULATION	external	external	external	external
COVER	insulated cover without lock	insulated cover without lock DN 400	insulated cover with lock DN 400	insulated cover with lock DN 400
FIXTURES AND FITTINGS	—	3/4"	3/4"	1"
VALVES	—	ball valve	ball valve	seal valve
COMPONENTS FOR INSTALLATION OF WATER METER	—	DN 15 or DN 20	DN 15 or DN 20	DN 20
VALVE	—	backflow inhibitor	backflow inhibitor	backflow inhibitor, integrated with seat valve
CONNECTING PIPES	—	—	—	PE 32mm



# WATER METER CHAMBERS

## DN 500

to be installed at the connection points of individual customers

### INTENDED USE

- water meter, fittings and fixtures installation at connection points of individual customers using water from water supply network

### ADVANTAGES

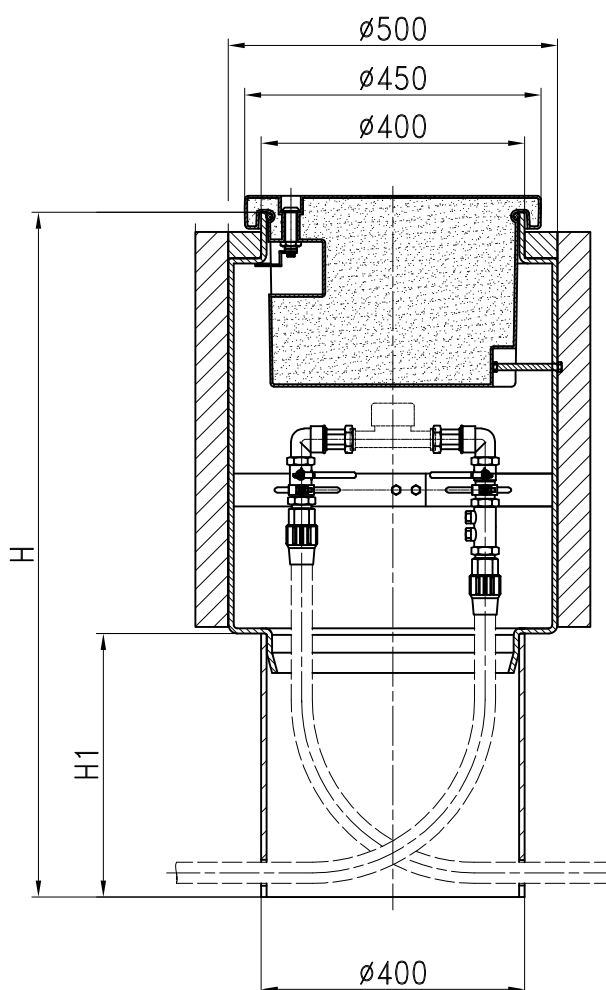
- optional sub-meter installation
- fittings and fixtures theft protection
- simple construction
- easy access to water meter(s) - reading from ground level
- guaranteed temperature above °C inside a chamber at ambient temperature up to -30°C
- compact diameter that does not require deep trenches



STANDARD DUO chamber interior

## DN 500 H=1400 chamber

VERSION CODE/HEIGHT	Body DN5-14B	Standard DN5-14STa	Standard with lock DN5-14STB	ASSOCIATED PRODUCTS	PRODUCT CODE
INSULATION	external	external	external	DN 400 lockable cover	CDN400-L
COVER	insulated cover with lock	insulated cover with lock DN 400	insulated cover with lock DN 400	DN 400 cover without lock (additional seal not needed)	CDN400
FIXTURES AND FITTINGS	—	3/4"	3/4"	inlet connector pipes from 25 to 40	SIC:
VALVES	—	ball valve	ball valve		
COMPONENTS FOR INSTALLATION OF WATER METER	—	DN 15 or DN 20	DN 15 or DN 20		
VALVE	—	backflow inhibitor	backflow inhibitor		
	—	—	a version for 2 water meters		



# WATER METER CHAMBERS

## DN 600

water meter and fittings and fixtures installation

### DIMENSIONS

- body height: H=1560 mm
- body diameter: 600 mm
- cover load: 15kN

### ADVANTAGES

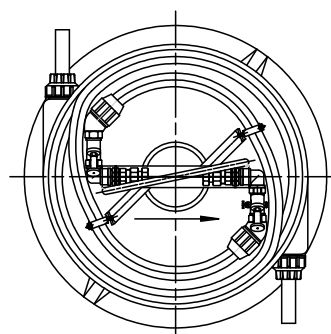
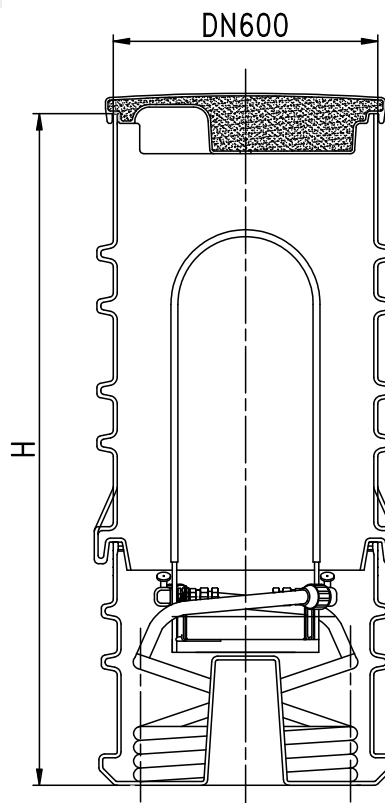
- single piece ribbed body construction ensuring high rigidity and firm anchoring in the ground
- sealed bottom protecting the chamber interior from flooding in cases of high ground water level
- water meter control panel
- installation of the water meter unit in the lower part of the manhole prevents freezing even in external air temperatures down to -30°C
- sealed cover (with mounted seal)



Chamber interior

## DN 600 H=1560 and H=1800 chamber

VERSION CODE/HEIGHT	Standard DN6-15S and DN6-18S	Standard with lock DN6-15STL and DN6-18STL	ASSOCIATED PRODUCTS	PRODUCT CODE
COMPONENTS FOR INSTALLATION OF WATER METER	one water meter DN 20	one water meter DN 20	steel cover (additional)	SCDN600
SEALS	DN 624	DN 624	DN 614 cover with lock	CDN614-L
VALVES	seat valve	seat valve	DN 614 cover without lock (additional seal not needed)	CDN614
BACKFLOW INHIBITOR VALVE	integrated with seat valve	integrated with seat valve	DN624 rubber seal	CSDN624
COVER	insulated DN 614 <b>(without lock)</b>	insulated DN 614 <b>(with lock)</b>		
CONNECTING PIPES	PB DN32	PB DN32		





# WATER METER CHAMBERS

## DN 800

for installation of water meters, fixtures and fittings



### ADVANTAGES

- single piece construction ensures
- protection from ground water and rainwater penetration
- light construction enables quick installation and transport without the need to use heavy equipment
- access steps made of stainless steel profiles
- fixtures, fittings and water meter(s) protected against freezing with external temperatures of even up to -30°C
- protection against ground and rain water penetration thanks to impenetrable body and cover (insulated PE cover, lockable, additional rubber seal)
- good access to the fixtures and fittings
- possible installation of multiple water meters

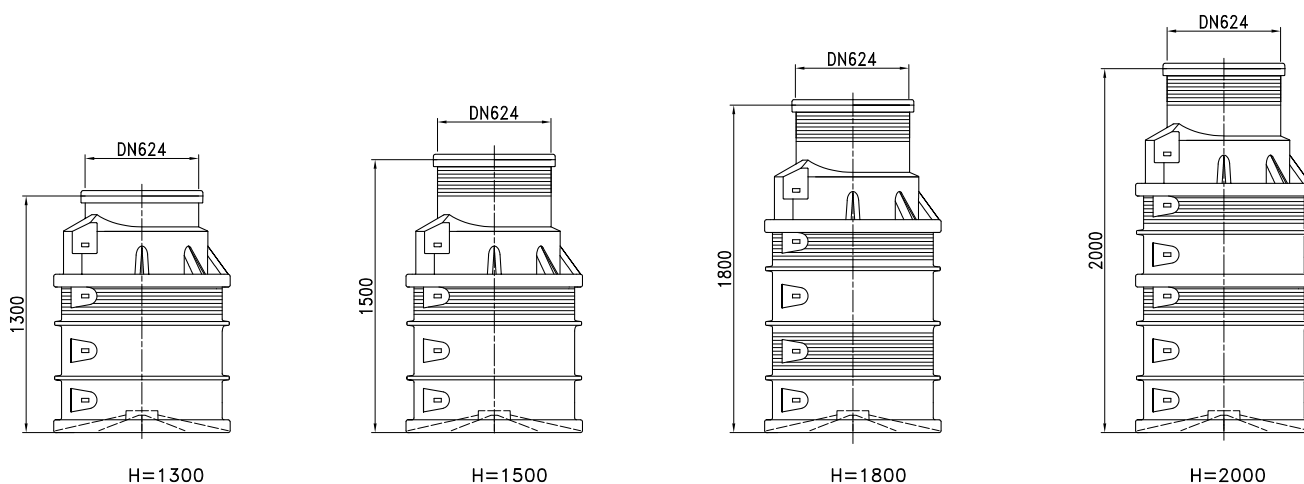
## DN 800 H=1500, H=1800, H=2000, H=2300 i H=2500 chamber

VERSION CODE/HEIGHT	Standard DN8-15S, DN8-18S, DN8-20S, DN8-23S and DN8-25S
COVER	DN 624 insulated <b>(without lock)</b>
STEPS	metal steps

ASSOCIATED PRODUCTS	PRODUCT CODE
steel cover (additional)	SCDN600
DN 624 cover with lock	CDN624-L
DN 624 cover without lock	CDN624
DN 624 rubber seal	CSDN624
installation service: tight connections	SP
installation service: connection pipes from 25 to 110	SIC:



Chamber interior equipped with stainless steel steps



# WATER METER CHAMBERS

## DN 1000, DN 1000/1200

for installation of water meters

### ADVANTAGES

- fixtures, fittings and water meter(s) protected against freezing with external temperatures of even up to -30°C
- protection against ground and rain water penetration thanks to impenetrable body and cover
- good access to fixtures and fittings - manhole type chamber
- possible installation of multiple water meters



## DN 1000/1000 H=1600 and H=1800 and DN 1000/1200 H=1600 and H=1800 chamber

VERSION CODE/HEIGHT	Standard DN 1000/1000 DN1-16ST and DN1-18ST	Standard DN 1000/1200 DN1/2-16ST, DN1/2-18ST	ASSOCIATED PRODUCTS	PRODUCT CODE
COVER	DN 624 insulated cover without lock	DN 624 insulated cover without lock	steel cover (additional)	SCDN600-L
STEPS	integrated PE steps	integrated PE steps	DN 624 cover with lock	CDN624-L
			DN 624 cover without lock	CDN624
			installation service: tight connections	SP
			installation service: connection pipes from 25 to 40	SIC:
			installation service: inlet seals 32-110	SIG:
			rubber seal DN 624	CSDN624

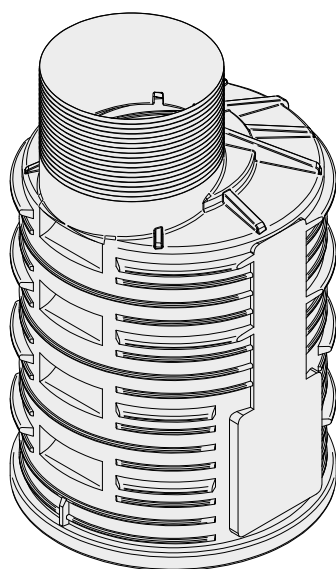
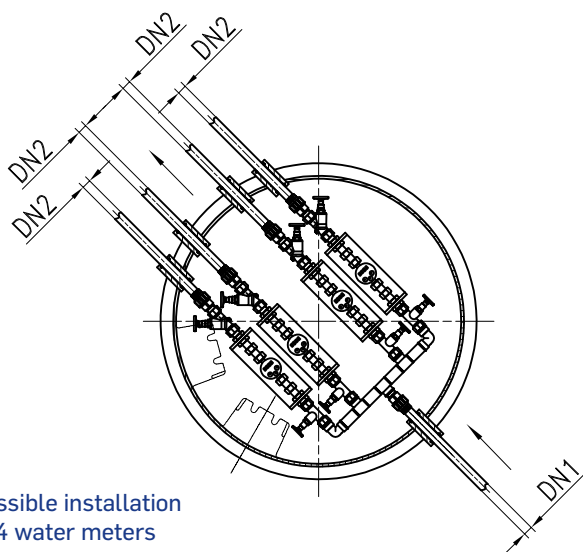


FIG. 1 DN 1000 water meter chamber

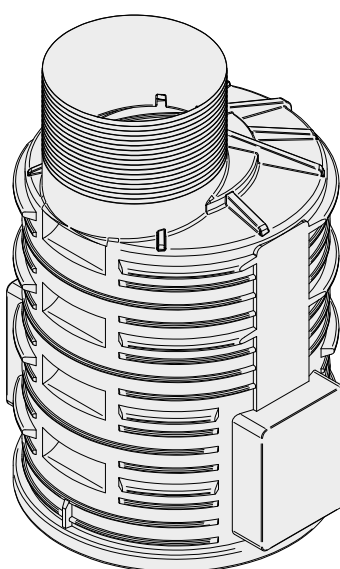


FIG. 2 DN 1000/1200 water meter chamber



Half connector



PE access steps

# TELECOMMUNICATION WELL

## SKO-1-PE

for the assembly of telecommunication installations

### APPLICATION

- for construction of cable ducts
- wells provide access to pipes while conducting works related to cable pulling and connecting
- they play the role of switching wells in ducts and are used as pass-through, corner or junction wells

### VALUES

- low weight
- perfect tightness
- easy and quick assembly
- possibility of assembly in hard conditions
- easy network expansion
- easy cleaning
- product durability
- resistance to low temperatures
- recyclable

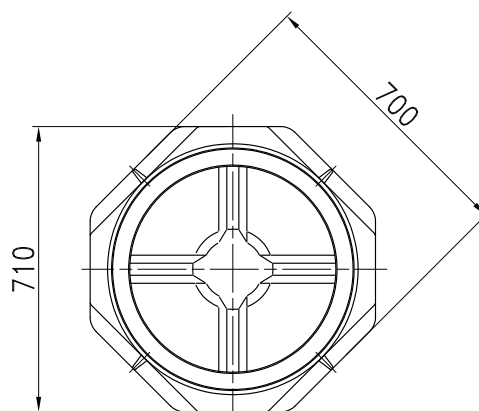
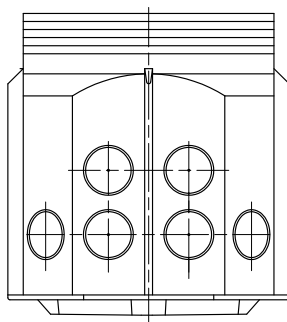
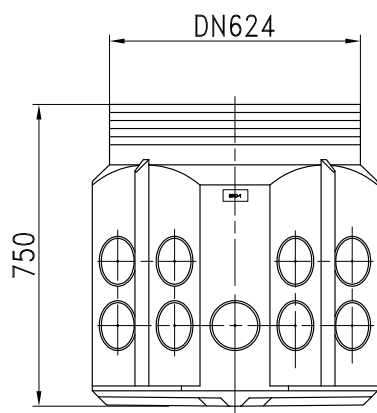




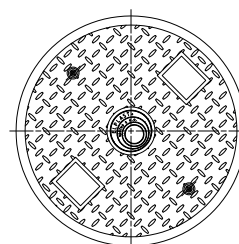
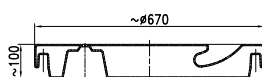
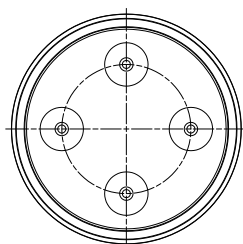
## Telecommunication chamber SKO-1 H -750

VERSION CODE	Body SKO-1/SKO1-B	Standard SKO-1/SKO1-ST	Lockable standard SKO-1/SKO1-STL
COVER	-	without lock DN 624	with lock DN 624
SEAL	-	DN 624	DN 624

ASSOCIATED PRODUCTS	PRODUCT CODE
DN 624 cover with lock	CDN624-L
DN 624 cover without lock	CDN624
DN 624 rubber seal	CSDN624
DN 650 sealing jacket with DN 624 seal	SC650-SKO
DN 624 sealing jacket (without a need to use a seal)	SC624-SKO
installation service: tight connections	SP
installation service: connection pipes from 25 to 40	SIC:
installation service: inlet seals 32-160	SIG:
steel cover (additional)	SCDN600



Chamber body SKO-1-PE



Cover Z600/DN624-PE

# TELECOMMUNICATION WELL

## SKO-2/4-PE

for the assembly of telecommunication installations

### APPLICATION

- for construction of cable ducts
- wells provide access to pipes while conducting works related to cable pulling and connecting
- They play the role of switching wells in ducts and are used as pass-through, corner or junction wells

### VALUES

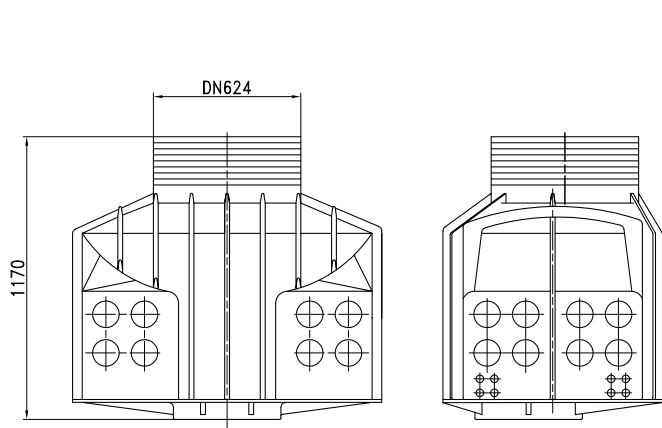
- low weight perfect tightness
- easy and quick assembly
- possibility of assembly in hard conditions
- easy network expansion
- easy cleaning product
- durability
- resistance to low temperatures
- recyclable

ASORTYMENT POWIĄZANY	KOD
DN 614 cover with lock	CDN624-L
DN 614 cover without lock	CDN624
DN 624 rubber seal	CSDN624
DN 650 sealing jacket with DN 624 seal	SC650-SKO
DN 624 sealing jacket (without a need to use a seal)	SC624-SKO
installation service: tight connections	SP
installation service: connection pipes from 25 to 40	SIC:
installation service: inlet seals 32-160	SIG:
steel cover (additional)	SCDN600

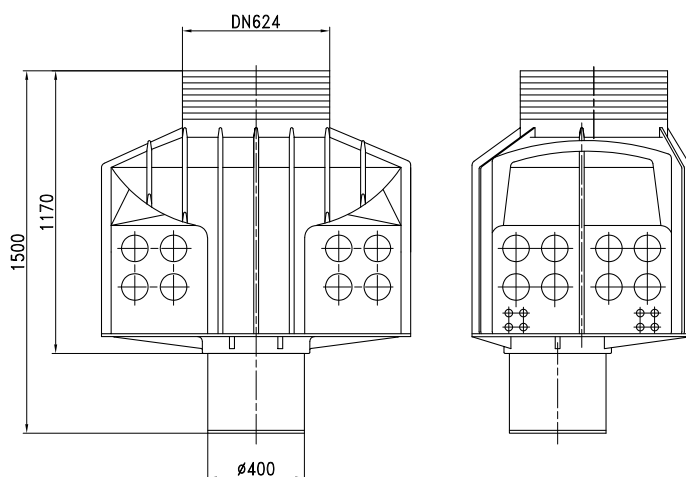


## SKO-2/4 H -750, SKO-2/4W H-1510 and SKO-2/4 telecommunication chamber - with sedimentation tank) H-1500

VERSION CODE/HEIGHT	Body SKO-2/4/SKO-B SKO-2/4W/SKO2W-B SKO-2/4W/SKO-B0 (sedimentation tank)	Standard SKO-2/4/SKO2-ST SKO-2/4/SKO2W-ST SKO-2/4/SKO2-2-ST	Lockable standard SKO-2/4/SKO2-STL SKO-2/4/SKO2W-STL SKO-2/4/SKO2-2-STL
COVER	-	without lock DN 624	with lock DN 624
SEAL	-	DN 624	DN 624



SKO-2/4 Cable storage box



SKO-2/4 Cable storage box with sedimentation tank

# CONNECTOR CONTAINERS

**ZZ-0, ZZ-1 and ZZ-1W**  
**ZZ-2 and ZZ-2W**

for protection of connector muff, reserve of fibre and telecommunication cables

## APPLICATION

for assembly in telecommunication networks

## VALUES

- low weight
- perfect tightness
- easy and quick assembly
- possibility of assembly in hard conditions
- easy network expansion
- easy cleaning
- product durability
- resistance to low temperatures
- recyclable

ASORTYMENT POWIĄZANY	KOD
DN 614 cover with lock	CDN614-L
DN 614 cover without lock	CDN614
DN 624 rubber seal	CSDN624
installation service: tight connections	SP
installation service: connection pipes from 25 to 40	SIC:
installation service: inlet seals 32-160	SIG:

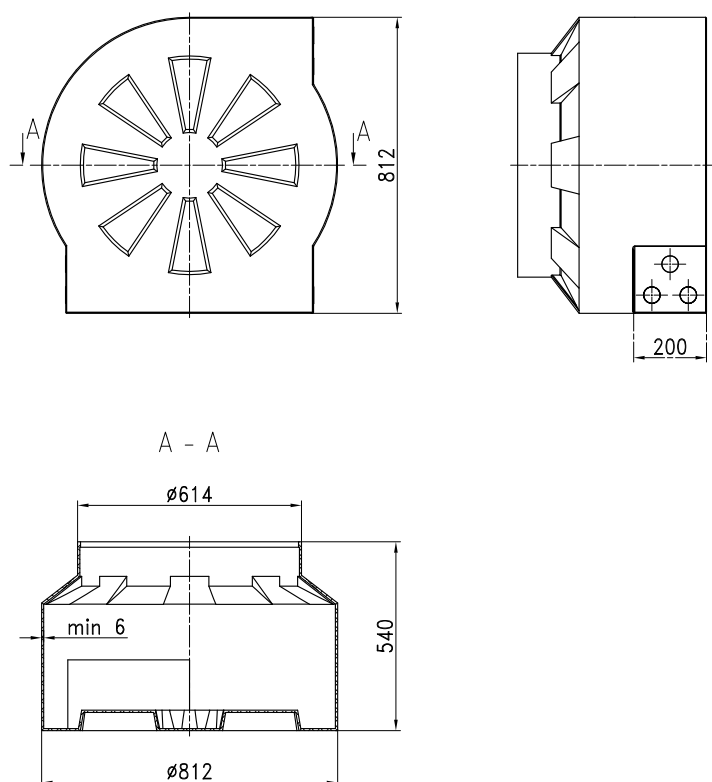


## Zasobnik złączowy ZZ-0

WERSJA KOD	Korpus ZZ-0/ZZ0-B	Standard ZZ-0/ZZ0-ST	Standard z zamkiem ZZ-0/ZZ0-STL
POKRYWA	-	bez zamka DN 614	z zamkiem DN 614
USZCZELKA	-	DN 624	DN 624
STOPA	-	tak	tak

## ZASOBNIKI ZZ-0

Stosowane głównie do zabudowy w sieciach telekomunikacyjnych i przeznaczone do ochrony zapasu kabla światłowodowego układanego w rurociągu kablowym.



Korpus zasobnika ZZ-0



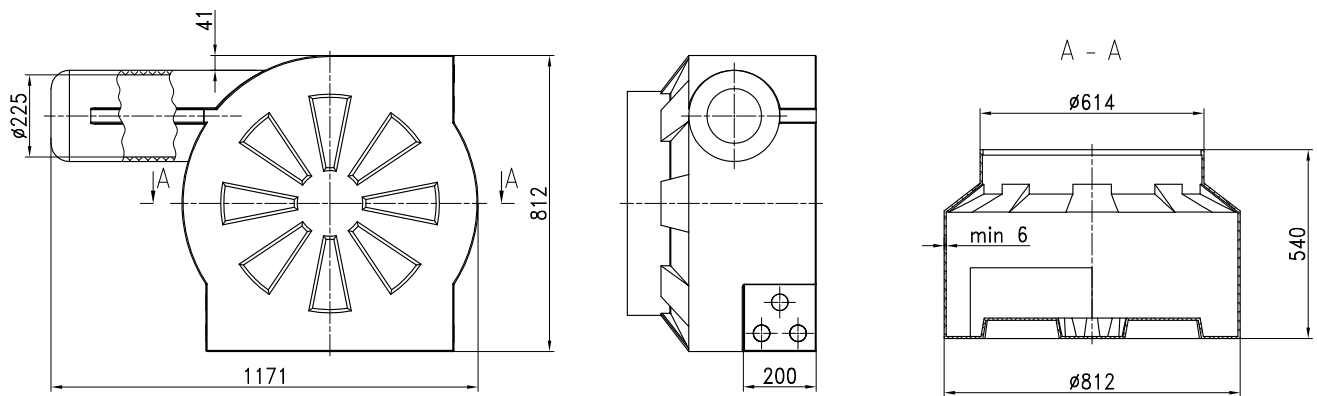
## Connector storage box ZZ-1 and ZZ-1W

VERSION CODE	Body ZZ-1/ZZ1-B and ZZ-1W/ZZ1W-B	Standard ZZ-1/ZZ1-ST and ZZ-1W/ZZ1W-ST	Lockable standard ZZ-1/ZZ1-STL ZZ-1W/ZZ1W-STL
COVER	-	without lock DN 614	with lock DN 614
SEAL	-	DN 624	DN 624
BASE	-	yes	yes

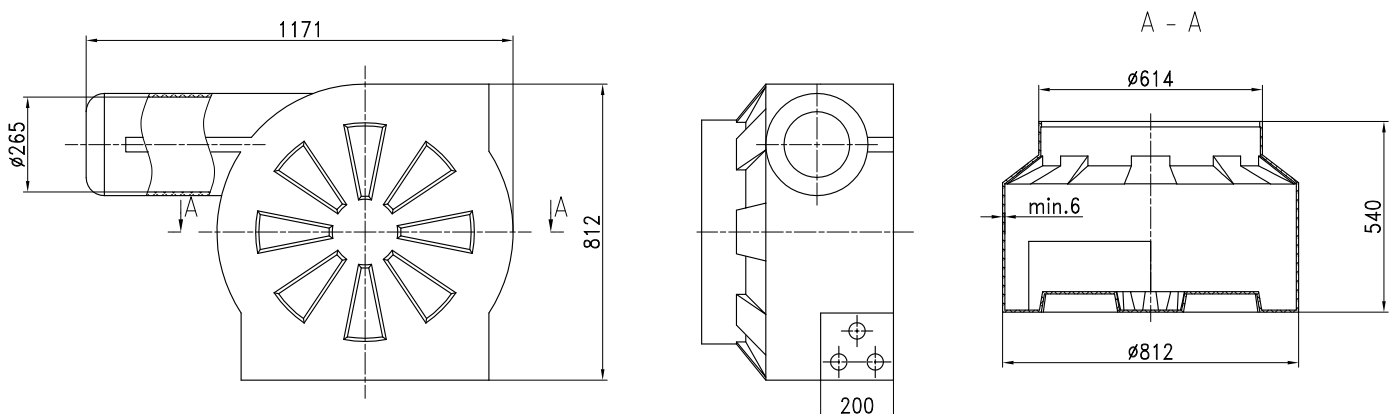
## ZZ-1 AND ZZ-1W STORAGE BOXES

These storage boxes are used for installation in telecom networks and are intended for protection of connection adapters and spare optic fibre cables laid in cable ducts.

As compared to ZZ-PE-1, ZZ-PE 1W type, the adapter compartment diameter is expanded.



ZZ-1 storage box body



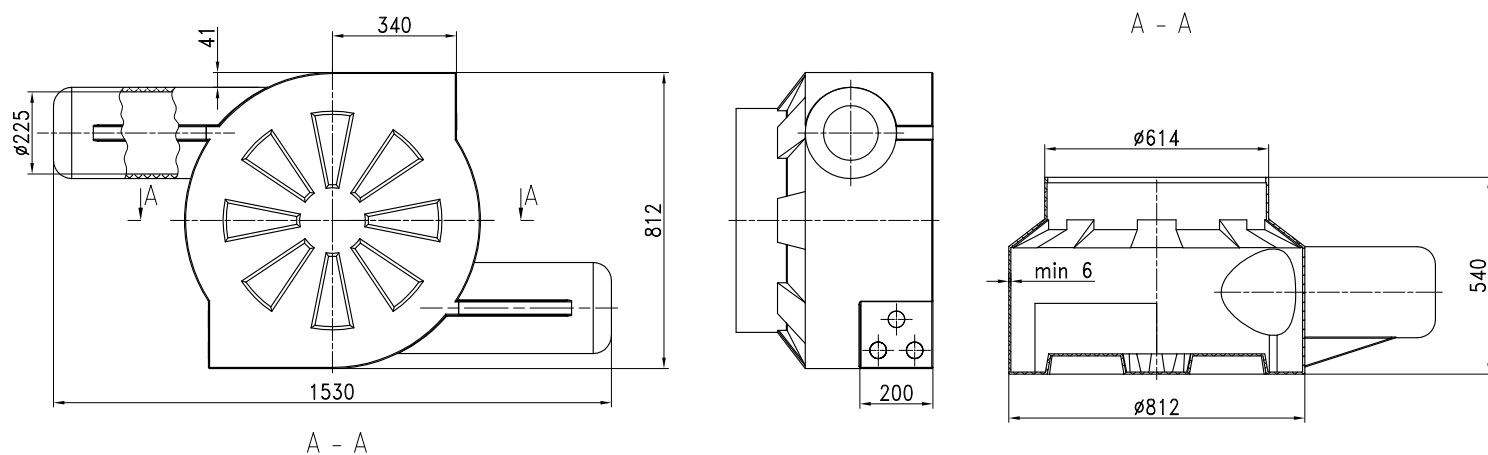
ZZ-1W storage box body

## Connector storage box ZZ-2 and ZZ-2W

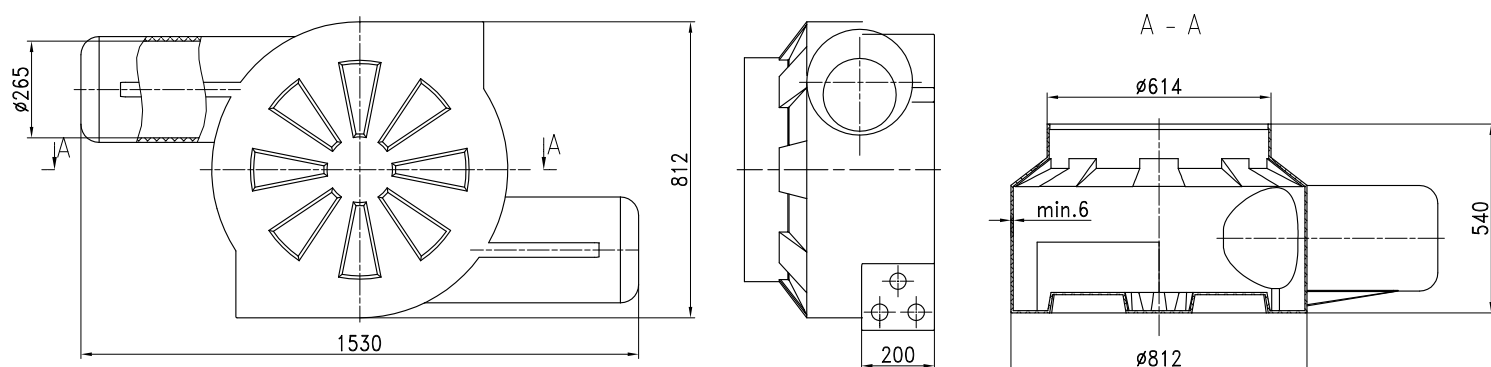
VERSION CODE	Body ZZ-2/ZZ2-B and ZZ-2W/ZZ2W-B	Standard ZZ-2/ZZ2-ST and ZZ-2W/ZZ2W-ST	Lockable standard ZZ-2/ZZ2-STL ZZ-2W/ZZ2W-STL
COVER	-	without lock DN 614	with lock DN 614
SEAL	-	DN 624	DN 624
BASE	-	yes	yes

## ZZ-2 AND ZZ-2W STORAGE BOXES

Used in telecom networks to protect connecting adapters and spare optic fibre cables laid in cable ducts. As compared to ZZ-2, the adapter compartment diameter in ZZ-2W model is extended - this enables (depending on spare cable diameter and length) - to install connecting adapters that are up to 520 mm long and with diameter of up to 260 mm.



ZZ-2 storage box body



ZZ-2W storage box body

# UNIVERSAL CONTAINERS

## TYP A2, TYP B2

telecommunications

### APPLICATION

- for storage and protection of small connector muffs from mechanical damages
- for fibre cable reserves
- possibility of cable pulling in the case of arcs with small radius
- in underground installations cable wells, cellars

### VALUES

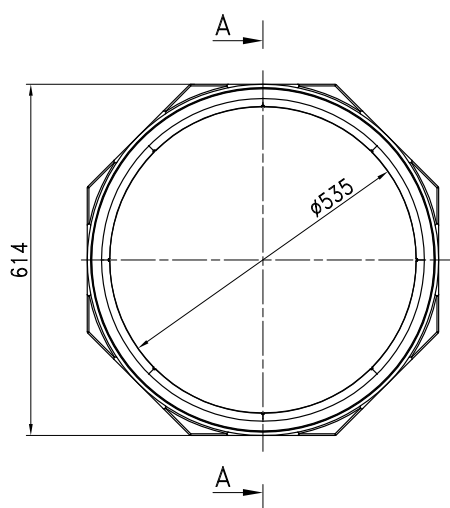
- low weight - total (body + cover) for A2 and B2 fittings does not exceed 11 kg
- small dimensions
- perfect tightness - also in the places where pipes and cables are inserted
- easy and quick assembly
- possibility of assembly in hard conditions
- product reliability - good mechanical strength constructions stiffness, resistance to corrosion and chemicals
- resistance to low temperatures
- recyclable



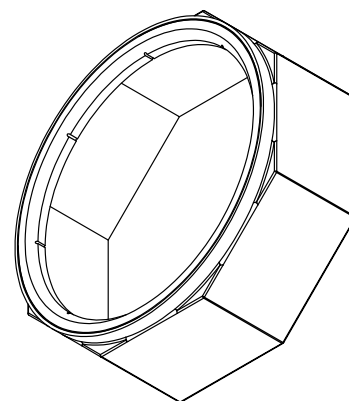
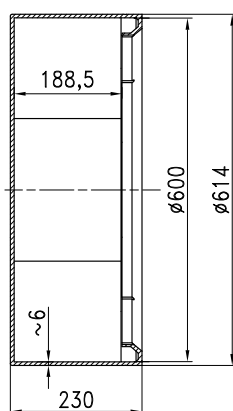
## Zasobnik uniwersalny ZKU (uniwersalny) TYP A-2 i B-2

VERSION CODE	Body ZKU A-2/ZKU-b and ZKU B-2/ZKU-b	Standard ZKU A-2/ZKUA-ST and ZKU B-2/ZKUB-ST	Standard with lock ZKU A-2/ZKUA-STL and ZKU B-2/ZKUB-STL
COVER	-	without lock DN 614	with lock DN 614
SEAL	-	DN 624	DN 624
BASE	-	yes (type A-2)	yes (type A-2)

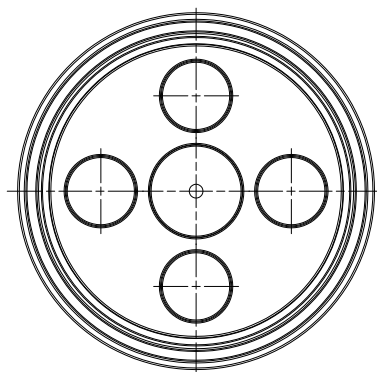
ASSOCIATED PRODUCTS	PRODUCT CODE
DN 614 cover with lock	CDN614-L
DN 614 cover without lock	CDN614
DN 624 rubber seal	CSDN624
installation service: tight connections	SP
installation service: connection pipes from 25 to 40	SIC:
installation service: inlet seals 32-160	SIG:



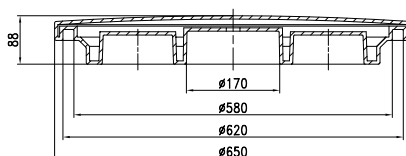
A-A (1 : 5)



### Universal storage box type B2



B-B (1 : 5)



Box cover

# CONNECTOR CONTAINER

## MICRO

for the assembly of telecommunication installations

### APPLICATION

- for assembly in cable ducts for protection of small connector muffs and for cable reserves

### VALUES

- Small total weight (body + cover) (approx. 12 kg)
- perfect tightness
- easy and quick assembly
- possibility of assembly in hard conditions
- easy network expansion
- easy cleaning
- product durability
- resistance to low temperatures
- recyclable



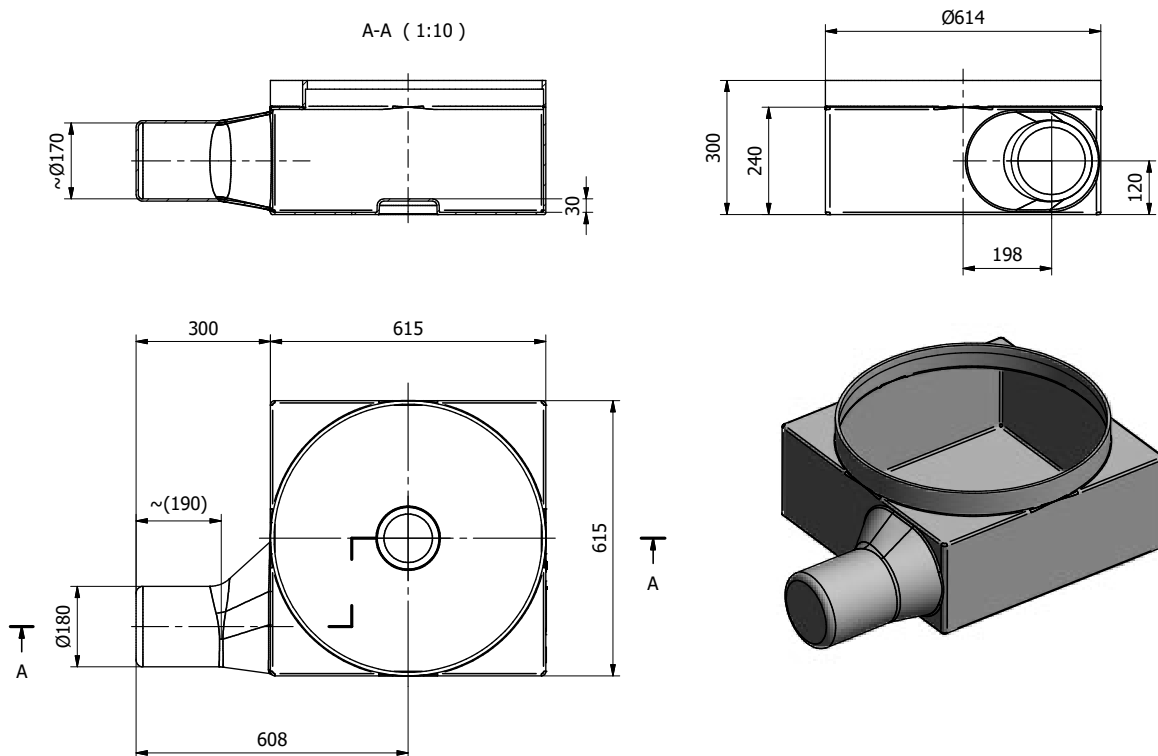


## MICRO cable box

VERSION CODE	Box body MICRO/MIC-B	Standard MICRO/MIC-ST	Standard with lock MIC-STL	ASSOCIATED PRODUCTS	PRODUCT CODE
COVER	-	without lock DN 614	with lock DN 614	DN 614 cover with lock	CDN614-L
SEAL	-	DN 624	DN 624	DN 614 cover without lock	CDN614
BASE	-	yes	yes	DN 624 rubber seal	CSDN624
				installation service: tight connections	SP
				installation service: connection pipes from 25 to 40	SIC:
				installation service: inlet seals 32-160	SIG:



Cover lock view – top plan view and bottom plan view



MICRO storage box body

# ASSOCIATED PRODUCTS

	Water meter chambers						Telecommunication storage boxes				Telecom. chamber	Product code	
	DN 400	DN 500	DN 600	DN 800	DN 1/1	DN 1/2	ZZ	ZKU a-2	ZKU B-2	Micro			
DN 400 cover with lock	✓	✓										CDN400-L	
DN 400 cover <b>without</b> lock	✓	✓										CDN400	
DN 614 cover with lock			✓				✓	✓	✓	✓		CDN614-L	
DN 614 cover <b>without</b> lock			✓				✓	✓	✓	✓		CDN614	
DN 624 cover with lock				✓	✓	✓					✓	CDN624-L	
DN 624 cover <b>without</b> lock				✓	✓	✓					✓	CDN624	
DN 650 sealing jacket with DN 624 seal											✓	SC650-SKO	
DN 624 sealing jacket (without a need to use a seal)											✓	SC624-SKO	
Rubber seal DN 624			✓	✓	✓	✓	✓	✓	✓	✓	✓	CSDN624	
Installation service - tight connection				✓	✓	✓	✓	✓	✓	✓	✓	SP	
Installation service - inlet connector pipes	✓	✓		✓	✓	✓	✓	✓	✓	✓	✓	SIC:	
Installation service - inlet seals					✓	✓	✓	✓	✓	✓	✓	SIG:	
Steel cover (additional option)			✓	✓	✓	✓					✓	SCDN600	

# PATFORMS AND PE PIPES

for hydrotransport

## MATERIAL

High wear resistance HDPE

## RANGE

DN200 to DN450 mm

## USED FOR

Handling of sand and gravel slurry and other materials mined in gravel pits

## BENEFITS

- Easy and quick assembly/disassembly
- High mobility of pipeline components
- PE pipes are resistant to incrustation and corrosion and have few maintenance requirements
- Easy rotatable for equal wear around the circumference
- Longer service life than in standard PE pipes
- Special piping size (heavy-duty thicker walls)



# FLOATING MODULAR WORK PLATFORMS

for offshore engineering and servicing

## USED FOR

- Work platforms for easy surface access to offshore equipment
- All-round use for surface offshore access

## BENEFITS

- Configurable into floating systems according to project and application specifications
- Convenient operation
- Safe to work with
- Long service life
- Easy to install
- Stable and firm



# MODULAR FLOATING DOCKS

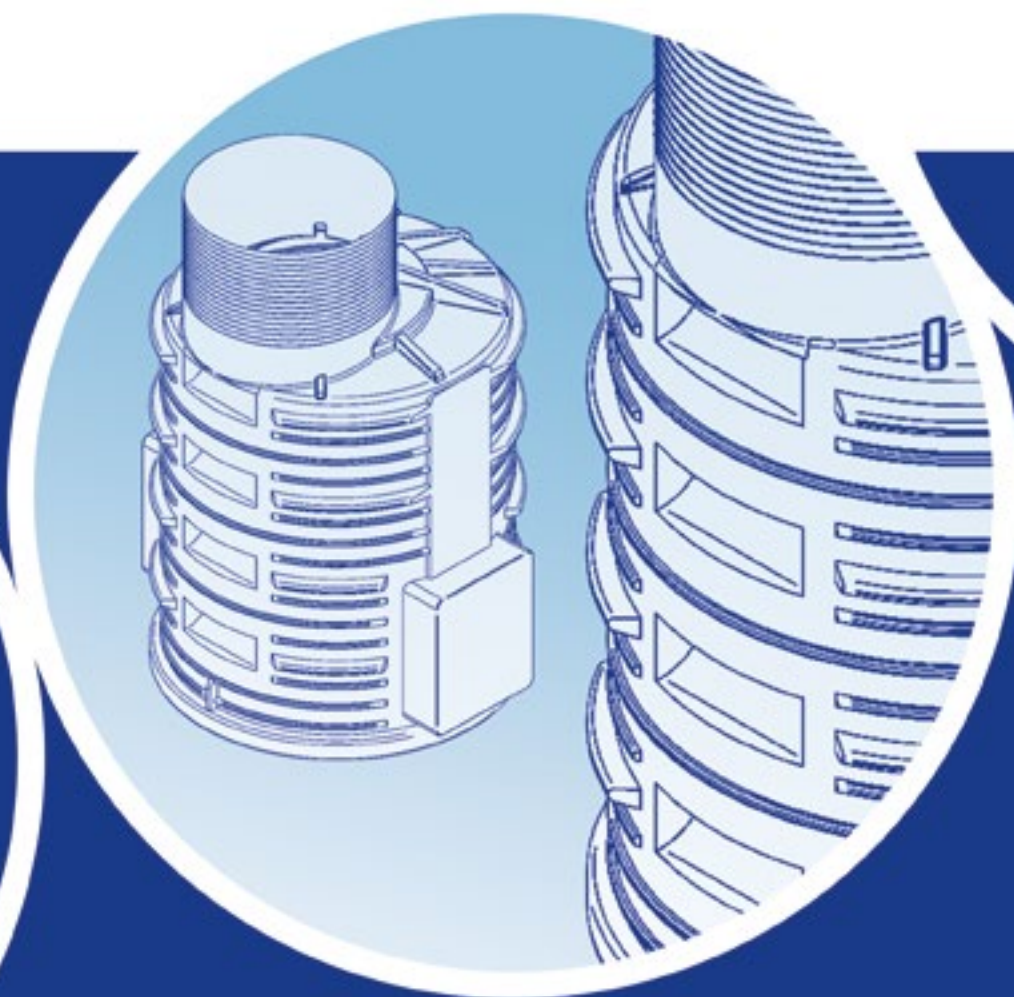
for engineering and leisure applications

## BENEFITS

- Easy and fast to assemble, disassemble, reconfigure, deploy and expand
- Highly durable, with a neat finish and maintenance-free operation
- Stable with a high buoyancy
- Many potential applications
- Long service life
- UV-resistant
- Non-slip finish
- Safe to work with
- High utility performance distinguished by the EUROPRODUKT award by the Polish Ministry of the Economy







ELPLAST+ Sp. z o.o.

ul. Niepodległości 8  
44-336 Jastrzębie-Zdrój  
NIP (TIN): 633-19-71-812

t. +48 32 471 80 40  
f. +48 32 471 10 43

[elplast@elplastplus.pl](mailto:elplast@elplastplus.pl)  
[www.elplastplus.pl](http://www.elplastplus.pl)

LET'S DO BUSINESS.