

# PLATFORMS FOR hydrotransport

## INTENDED USE

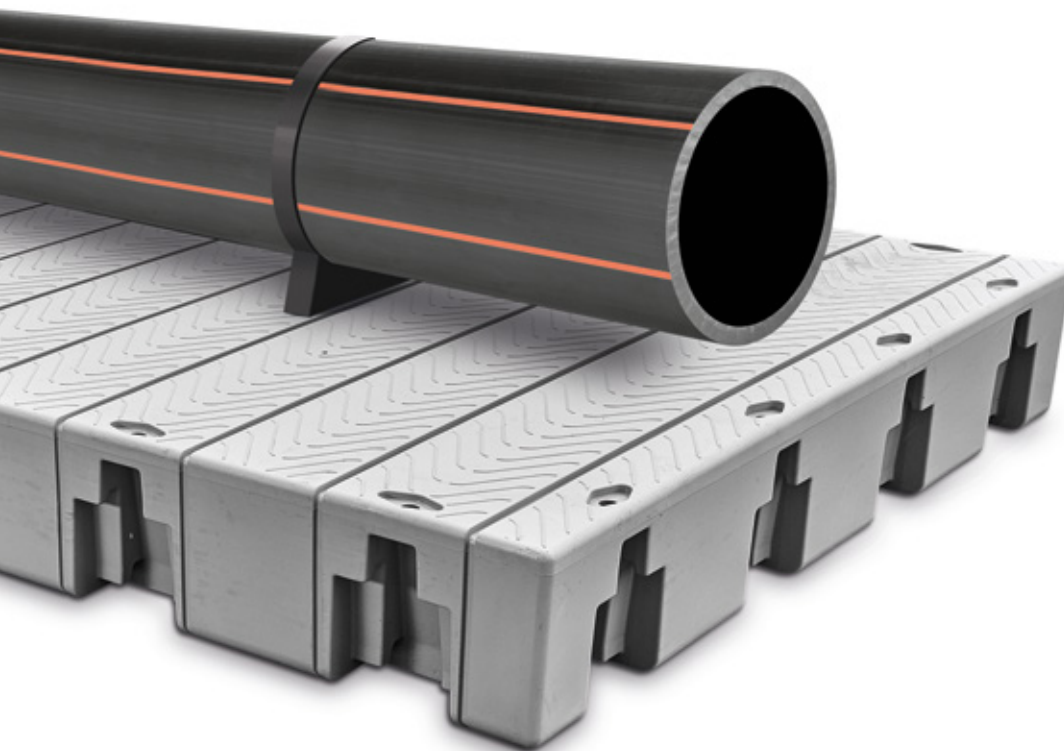
---

as a load-bearing deck for hydrotransport pipelines

## ADVANTAGES

---

- convenient use
- work safety
- easy pipe rotation and replacement of worn pipe sections on the platform surface (not in water)
- long life span
- safe passage along the pipeline to the dredger

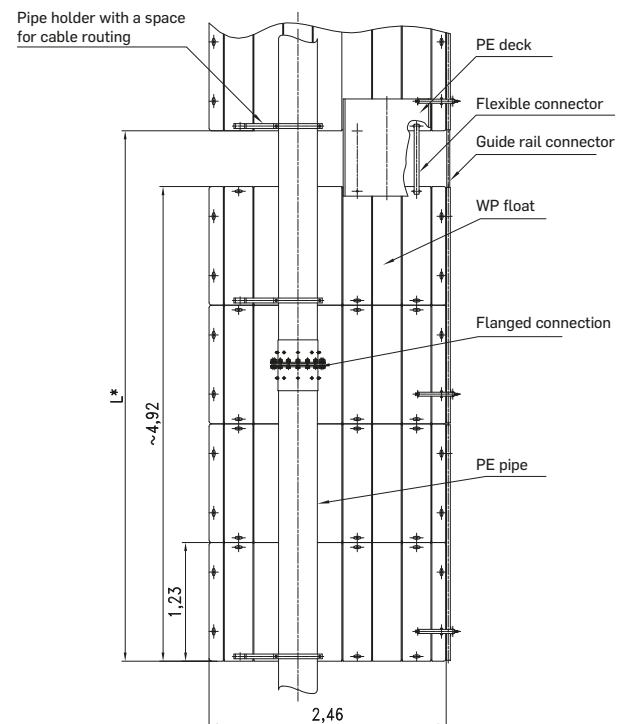
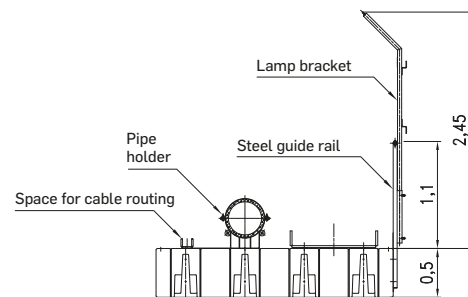
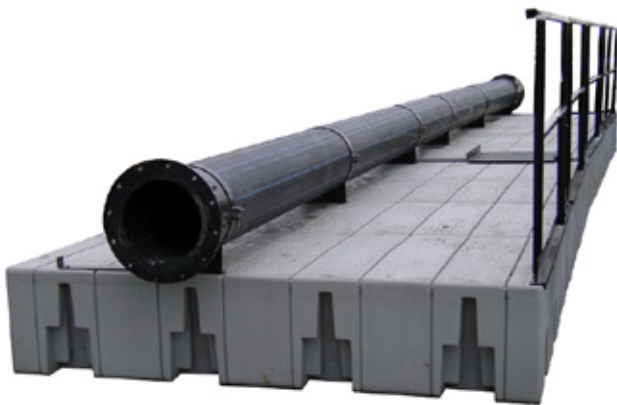


STANDARDS: ZN: ELPLAST+ 026

The floating platforms are used as a load-bearing deck for the hydrotransport pipelines. The complete floating platform is made of plastic elements of W-series floating platforms (high-board).

The standard platform includes steel guard rails, pipe holders with the cable stop, steel or plastic connecting deck  $L= 1.0$  m, lamp bracket and connectors. On the customer's request, we can produce a deck with a different length, e.g.:  $L=0.75$  m,  $L=1.6$  m,  $L=2.5$  m.

We also manufacture W-type float modules, which can be used as single floats for hydrotransport pipes.



The size of a complete standard platform for hydrotransport from W-series deck elements.



An exemplary application of W-series single floats for hydrotransport pipe.

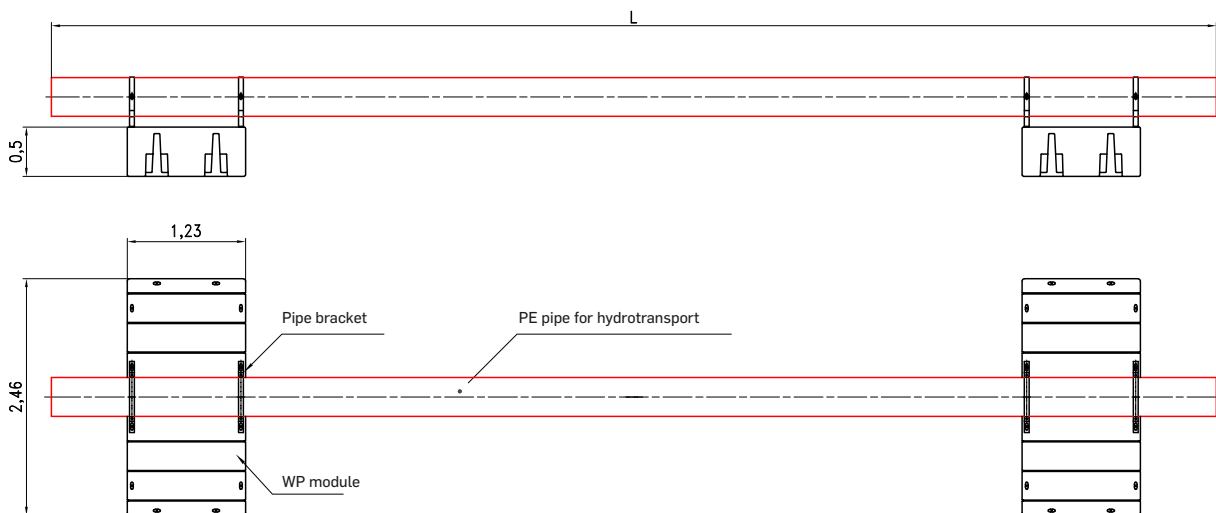


Fig. 3 Exemplary applications of W-series single floats for hydrotransport pipe or platform for a pump.

Table 1 Standard platform technical properties 1 set.

ITEM	DATA	(4 x W-type float basic module)
1	Dimensions:	L 545.00 cm x W 244 cm
2	Weight [kg] — plastic elements: — steel elements (acc. to Fig. 1)	4 x 91 [kg] = 364 [kg] = ~ 162 [kg]
3	Usable area [m <sup>2</sup> ]	4 x 3.00 [m <sup>2</sup> ] = 12.00 [m <sup>2</sup> ]
4	Operational load [kg/m <sup>2</sup> ] or [kg/platform]	380 [kg/m <sup>2</sup> ] x 12.00 [m <sup>2</sup> ] ≈ 4,560 [kg/platform]
5	Maximum load while maintaining floating [kg]	4 x 1,139 [kg] = 4,556v [kg]

