



ELPLAST+



MODULAR FLOATING DOCKS

we set new standards...



www.elplastplus.pl





ABOUT US

„Elplast+” Sp. z o.o. , a Polish Company having 30-year-long tradition of manufacturing plastic products, is a renowned manufacturer of polyethylene modular floating docks.

The modular components are suited for, among other things:

- Canoe landing stages and rowing piers
- Marinas
- Recreation and industrial platforms
- Floating swimming pools in open water

Our solution is innovative because it eliminates timber and steel as low effective materials, and it uses aesthetic, easy to assemble and maintenance-free plastic components instead. These plastic components are closed sections and they function as modular floats. They are durable, safe to use, hygienic and significantly exceed previously applied solutions.

The ELPLAST+ floating docks comply with the General Product Safety Directive 2001/95/EC of the European Parliament and the EU Council and fulfil the standard requirements.

Specify your requirements – we deal with the rest!
Safety, durability, aesthetics in the first place!



ROWING, CANOEING, FISHING

LOW PROFILE FLOATING DOCKS

- Perfect solution for small vessels
- Low profile freeboard provides easy transition when entering or exiting your paddle boat, canoe or pontoon
- Stable and rigid construction
- Easy assembling and disassembling
- You can change your floating dock configuration season after season



COLOR PALETTE

BASIC FLOAT SECTION NP

Colour: optional
Dimensions:
 1,16 m x 1,55 m x 0,25 m
Weight: ca. 39 kg
Maximum floatation per one low profile section: ca. 321 kg
usable area: 1,47 m²



COLOR PALETTE

BASIC FLOAT SECTION NP 2F

Colour: optional
Dimensions:
 1,55 m x 2,32 m x 0,25 m
Weight: ca. 72 kg
Maximum floatation per one low profile section: ca. 640 kg
usable area: 3,60 m²

Many rowing clubs and canoeing clubs, municipal sport and recreation centres and communal councils have trusted us!



MARINAS AND PORTS

HIGH PROFILE FLOATING DOCKS

- Perfect solution for mooring larger vessels and for constructing floating objects that require high stability and floatability
- Large area and high freeboard of the float sections resulting in a stable and rigid construction
- Perfectly suited for assembling marinas, recreational and gastronomic platforms and swimming pools
- Anti-slip surface imitating wood grain
- UV resistant
- Maintenance-free, unlike wooden docks
- Simple and safe anchoring system
- Modular dock design enables you to assemble various attractive configurations, e.g.: T-docks, U-docks, L-docks, F-docks and also straight docks and swimming platforms.



COLOR PALETTE

BASIC FLOAT SECTION WP

Colour: optional

Dimensions:

2,46 m x 1,23 m x 0,50 m

Weight: ca. 91 kg

Maximum floatation per one

low profile section: ca. 1139 kg

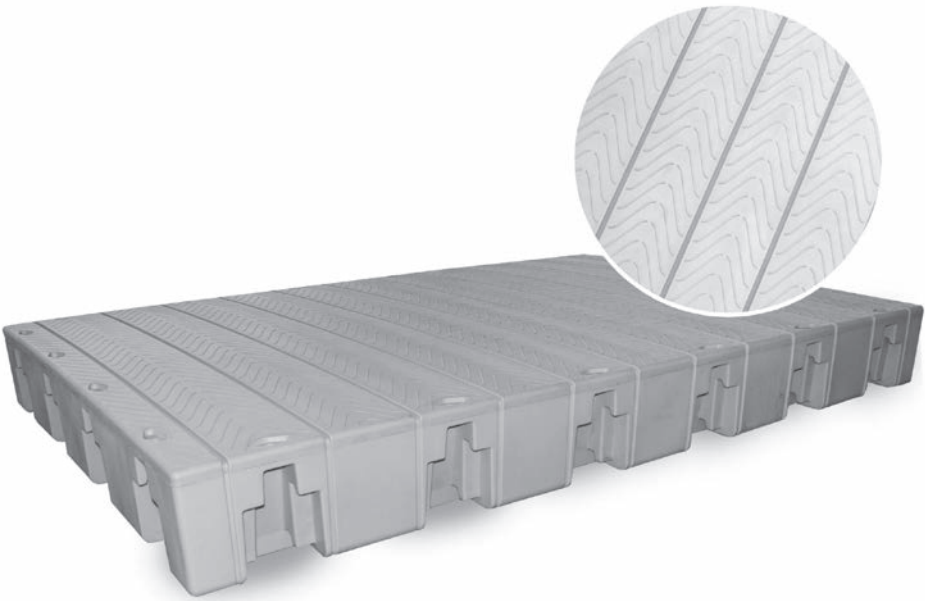
usable area: 3 m²



ANTI-SLIP SURFACE STRUCTURE



**MOVING ON THE PLATFORMS
IT IS EVEN SAFER!**



SAFETY, AESTHETICS,
DURABILITY FIRST



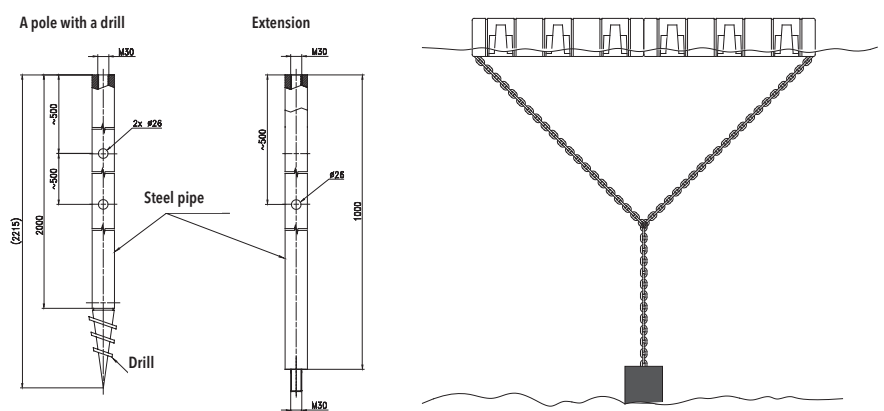
REARRANGE YOUR FLOATING DOCK AS OFTEN AS YOU WANT!



ANCHORING METHODS

- With chains to anchor your dock using mooring anchors
- With anchor poles that are augered into the lake/river bed - in this case the floating dock moves vertically along the poles that are placed either in the piling loops or the pole connectors.

Examples:



The anchoring system is selected depending on the local conditions in the water



ACCESSORIES FOR LOW PROFILE (N) FLOATING DOCKS AND HIGH PROFILE (W) FLOATING DOCKS



A **Float Connectors NL and WL** - used to attach basic float sections; they are placed in slip-fit connector sockets and secured with two bolts, washers and nuts.



B **Pole Connectors NS and WS** - versatile components that slip-fit into exposed connector sockets in a basic float section; they can accommodate a variety of anchoring methods, depending on the dock location and your needs.



C **Pole Cover WNO** - cover the anchor pole tops.



D **Extra Floatations ND and WD** - these components add 27 kg of extra floatation for the low profile Series and 136 kg for the high profile Series.



E **Accessory Connectors NA and WA** - with these connectors you can add attractive accessories, e.g. bumpers, lights and ladders, that can be fastened to the dock side.



F **Finishing Connectors NW and WW** - they are designed to finish your dock by filling empty/ unused connector sockets.



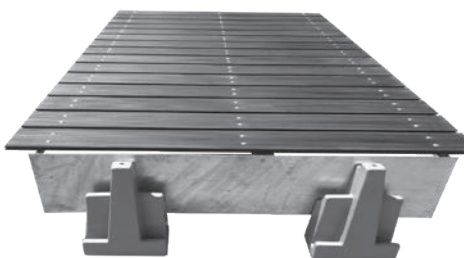
G **Cleat** - it is designed to secure vessels to your dock; it is bolted to the top of a float section



H **Guardrails** - their sizes correspond to the sizes of the float series modules, so you can surround with them floating docks of any size



I **An anchor rod made of stainless steel, $L = 2$ m**, ended with an auger with an extension (1 or 2 m) - it is used to anchor the platform; if the pole $L = 2$ m turns out to be too short for a given water depth, attach the pole extension $L = 1$ m.



K **Entrance ladder** - wooden or composite, ensures safe entry and exit from the platform



J **Stainless steel swim ladder** - provides swimmers easy access in out of the water.



OTHER APPLICATIONS...



OUR PLATFORMS USED ARE ALSO AS:

- Work platforms
- Playing fields for kayak/canoe polo
- Fish cleaning stations
- Walk-ways in municipal parks
- Recreation platforms
- Docks for confining the non-swimmer zones in swimming pools
- Platforms for hydro-transport
- Floating stages

DESIGN YOUR OWN DOCK!

We provide assistance in designing, transport and assembling. If you decide on cooperation with us, you will choose a reliable partner.

The modular float sections are designed to be configured in a variety of shapes, and to be reconfigured and expanded to suit any of your needs



**ELPLAST+ MODULAR FLOATING POOLS
SAFE WATER RECREATION IN EVERY COMMUNE**



ADVANTAGES RESULTING FROM CONSTRUCTION OF FLOATING POOLS:

- Safe bathing area for children and adults in any water region
- Quick and easy to build community pools at favourable prices
- Quick assemble according to the design
- Modern and original
- Comfortable rest in the natural environment
- Modular design easy to expand



ADVANTAGES OF POLYETHYLENE SWIMMING POOLS:

- UV protected
- Maintenance-free – such pools generate no repair costs, unlike wooden
- or steel ones
- Non-corrosive, unlike steel structures
- Anti-slip walk area imitating wood grain
- No sharp edges, no splinters, no protruding parts
- Can be left in water for winter
- Easy and quick to assemble, disassemble, reconfigure, relocate and expand
- Long life

Create a beautiful swimming pool in a month!
Safety, Low investment costs, Guaranteed quality and durability



INRUN PORTS (PLATFORMS) FOR SCOOTERS

The INRUN PORT has a modular structure, consisting of 3 parts. Its modular design allows for the expansion of the port and parking the scooters one by one. The port is made of polyethylene, a durable, Corrosion-resistant material and mechanical damage. Properly shaped construction and overrun rollers ensure stable scooter backrest. The upper surface of the port is non-slip. The port is designed for two, three and four people water scooters. Has two rollers for the keel, and eight rollers for the bow and a handle for attaching the scooter and winch holes. There is a possibility of fixing the port facing or sideways to the pier.



INRUN PORT CONNECTORS TO THE PLATFORM



COMFORT OF USE!

- rollers for easy entry and exit of the scooter
- protection of the scooter against damage during mooring
- keeping the scooter clean

SAFETY

EASY ASSEMBLY AND DISASSEMBLY

EASY TRANSPORT

(THE PORT IS MADE OF 3 PARTS)

ANTI-SLIP SURFACE

www.elplastplus.pl



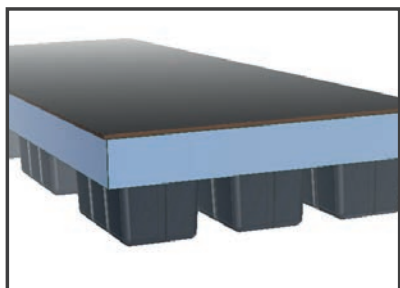


FLOATS FOR BUILDING FLOATING DOCKS



The floats, made of polyethylene, are rotationally moulded. The float can be filled with foamed polystyrene so even punctured the float is still floatable.

- Easy and quick to assemble
- Stable construction of high floatability
- Completely resistant to environmental factors
- UV-protected and resistant to impact
- Variety of applications



FLOAT PE TYPE 1

Dimensions: 1130x640x565 mm

Weight: ca. 13 kg

Total max load: ca. 260 kg

Useful load: ca. 220 kg

Colour: Black

FLOAT PE TYPE 2

Dimensions: 1130x640x650 mm

Weight: ca. 14 kg

Total max load: ca. 300 kg

Useful load: ca. 260 kg

Colour: Black



FLOAT PE TYPE 3

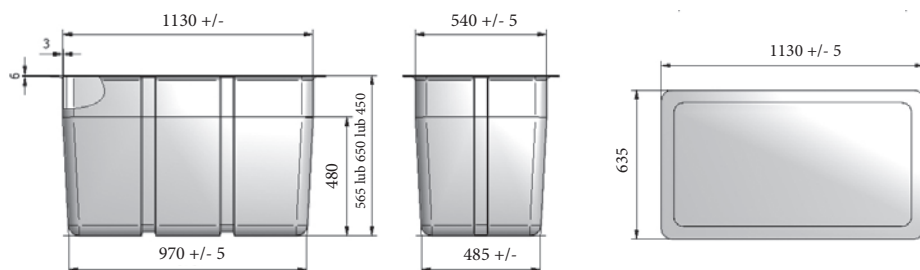
Dimensions: 1130x640x450 mm

Weight: ca. 11 kg

Total max load: ok. 220 kg

Useful load: ok. 175 kg

Colour: Black



On customer's request we can provide wooden docks on the PE floats manufactured by us!!!



GARDEN FURNITURE

A tasteful counterpart of the always fashionable rattan. Garden furniture is made of polyethylene, which guarantees extraordinary durability, resistance and comfort of use.

Dimensions:

The armchair:

H 78 cm, W 73 cm

The table:

H 49 cm, W 69 cm

table with base

H 70 cm, W 69 cm



Timeless elegance, durability and aesthetics, solid workmanship, all-year use



DECORATIVE FLOWERPOTS

The material used and the design of the pots mean that they can be used both in internal and external arrangements, while maintaining a long life and simplicity of execution.



POT IMITATING STONE:

(brick, gray marble, painted (black and silver))

Dimensions:

M: H 33 cm, W 44 cm

L: H 38 cm, W 51 cm



POT IMITATING RATAN:

(painted, wenge)

Dimensions:

M: H 36 cm, W 41 cm



FLOWERPOT IMITATING A BARREL:

(painted)

Dimensions:

M: H 33 cm, W 39 cm

L: H 38 cm, W 45 cm

Frost-resistant, unique design, light, easy to keep clean, multiple use (as a cover or as a flowerpot)



PRIZES AND AWARDS GRANTED TO ELPLAST+



The Boat Show Gold Medal



The ZAGLE Honourable Mention



The Europroduct Title



The Europroduct Diploma



Product for a medal-distinction of the Polish Sports Club



Quality of the Bridges of the Year



ELPLAST+

„ELPLAST+” Sp. z o.o.

Niepodległości street No. 8,
44-336 Jastrzębie-Zdrój, Poland

Phone: +48 32 471 80 40

e-mail: elplast@elplastplus.pl

www.elplastplus.pl

