

WATER METER CHAMBERS

DN 400

TYPES

- **STANDARD**
- **PREMIUM** (with locked cover)

It is possible to buy the chamber body (w/o equipment)

DIMENSIONS

- body height: H=1400 mm
- insulation length: L=800 mm

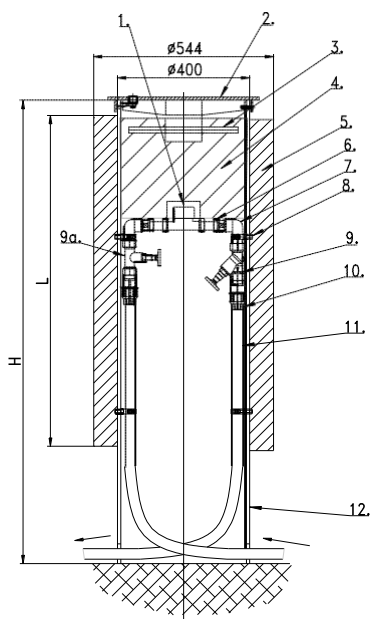
APPLICATION

- air temperature up to -30°C above ground

VALUES

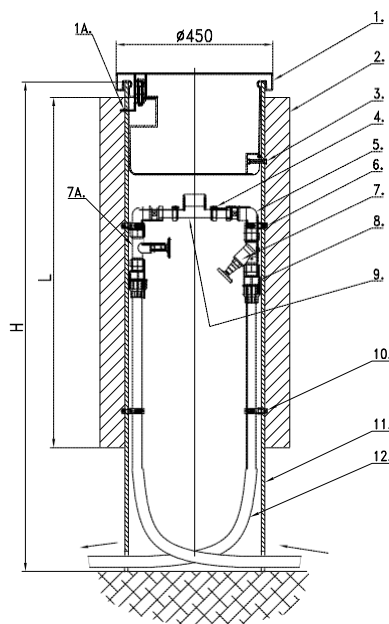
- simple construction
- easy access to the water meter – reading from the ground level
- insulated body and space above the water meter
- small diameter that does not require large excavations
- the set includes a complete installation for water meter assembly





DN 400 WATER METER CHAMBER STANDARD VERSION

1. PE insulated cover, A15 class
2. Side chamber insulation
3. Compensation screw union
4. Elbow 90° 3/4"
5. 3/4" cut-off ball valve
6. EA 3/4 anti-contamination valve
7. Ø 32 3/4" straight connector
8. Water meter (ordered separately)
9. Body - HDPE Ø 400 mm pipe
10. HDPE Ø 32mm pipe (optional)



DN 400 WATER METER CHAMBER PREMIUM VERSION

1. PE insulated cover, A15 class
- 1A. Cover lock
2. Side well insulation
3. Cover latch
4. Compensation screw union
5. 90° 1" elbow
6. Securing clamp
7. Mushroom shut-off valve integrated with an anti-contamination valve
- 7A. 1" Mushroom shut-off valve
8. Ø 32/1" straight connector
9. Water meter (ordered separately)
10. Securing clamp
11. Body - HDPE Ø 400 mm pipe
12. HDPE Ø 32mm pipe

H=1400 mm body height;
L=800 mm insulation length. Cover load: 15 kN (can be built on green areas and road lanes with permissible load for A class by PN-EN 124).

In STANDARD version the fittings enable the assembly of a water meter DN 15 (1/2") with G 3/4" thread (or DN 20 after reduction) and inlet and outlet by PE Ø 32 pipe.

In PREMIUM version a DN 20 (3/4") water meter can be assembled with G 1" thread (or DN 15 after reduction), also with inlet and outlet by PE Ø 32 pipe.

Other versions of sizes, internal installations and DN 400 water meter well loads - on request.

The decision on chamber construction on a road lane is made by a designer, road owner or future user.

During the construction and operation the chamber assembly and operation instructions must be followed.



Interior of the PREMIUM chamber



Interior of the STANDARD well

APPENDICES:

- Instruction EL-42-4/VI-2011 Assembly instruction for the DN 400 water meter chamber
- Technical approval AT /2007-03-2237
- Declaration of conformity no. 25
- CSW 26.11.10 price list