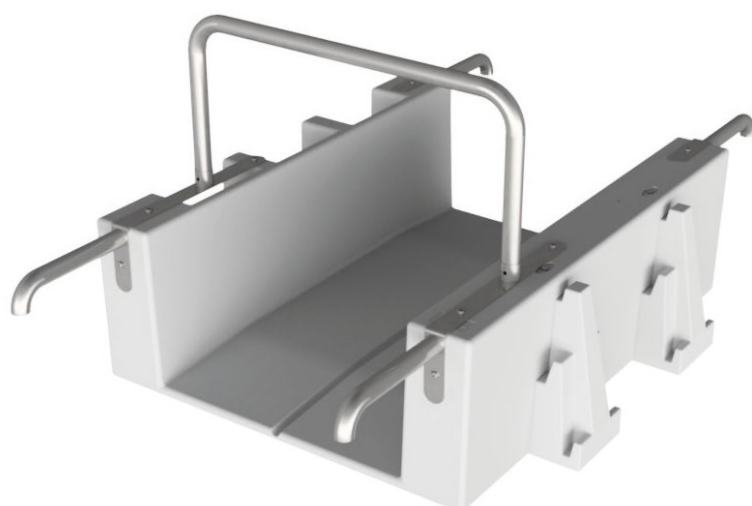


# HANDLING RAMP

## CANOE SLIP

### ADVANTAGES

- convenient in use:
  - protects the canoe against damage during mooring, loading onto the ramp and transport
  - easy and stable getting in and out of the canoe
  - facilitates user's access to the canoe
  - helps keep the canoe clean
  - complete with railing and handholds made of stainless steel for easier launching and slipping the canoe back onto the ramp.
- safe
- easy to install and remove
- expandable (the length can be increased by attaching more ramp modules)
- built to last years
- fits most commercially available canoe sizes



To meet the expectations of canoeing enthusiast, we have developed a handling ramp, or a canoe slip. The handling ramp is designed for amateur and professional users for easier embarking from a pier or a shore, easier launching, and easier recovery of small craft, like canoes, surf boards, and the like. The dedicated form and fitting railings make launching and slipping the craft from and onto the ramp easy.

#### SPECIFICATIONS

NO.	SPECIFICATION	Value
1	Overall dimensions:	L 152 cm x W 124 cm x H 51 cm
	Ramp inner surface	L 152 cm x W (inner) 83 cm x H 43 cm
2	Weight:	
	- slip weight	50 kg
	- slip weight incl. set of railings	64 kg
	- slip weight incl. set of railings and 3 pieces of NL couplers for the ELPLAST+ low-board pier	67 kg
	- slip weight incl. set of railings and 2 pieces of WL couplers for the ELPLAST+ high-board pier	69 kg
	- slip weight incl. set of railings and 2 pieces of steel couplers for attachment to a pier or berth wall	73 kg
	- average canoe weight incl. 2 occupants	ca. 220 kg
3	Ramp/slip dimensions incl. railings:	
	- Overall ramp/slip height incl. railings	103.6 cm
	- Ramp surface-to-railing clearance	92.6 cm
	- Railing height above the ramp/slip top	48.10 cm

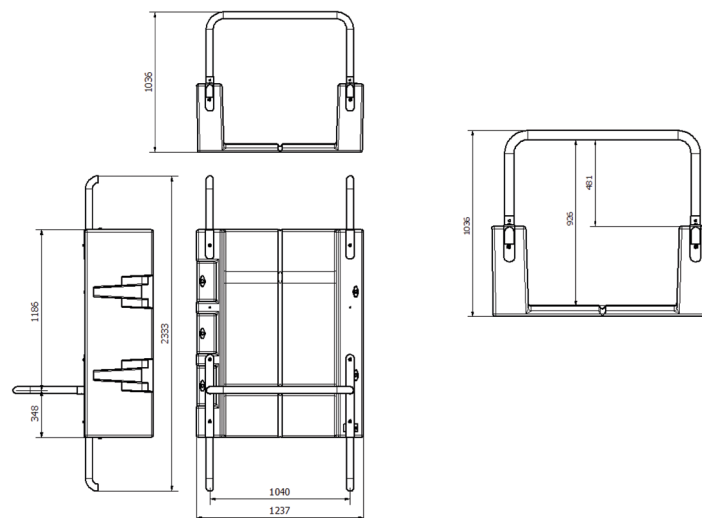
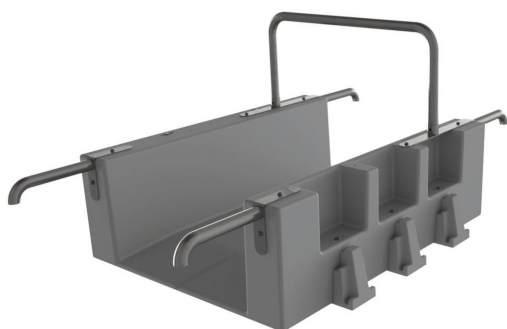
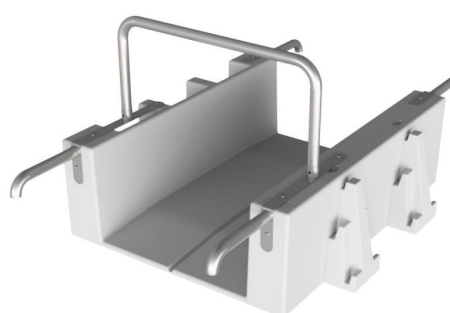


Fig. 1 Slip dimensions with the set of railings



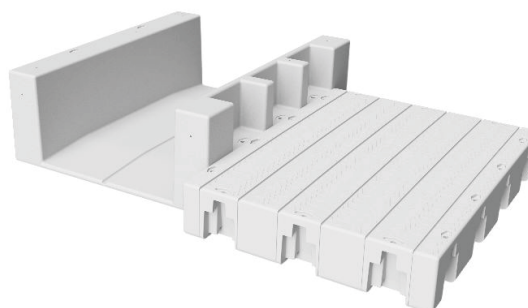
**Fig. 2** Canoe ramp/slip incl. 3 pcs. of NL couplers for the ELPLAST+ low-board pier



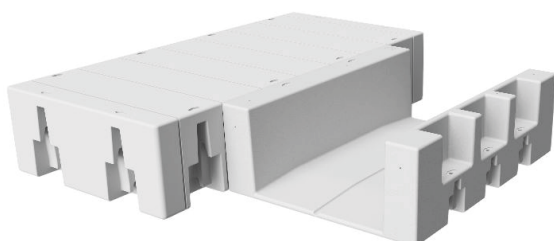
**Fig. 3** Canoe ramp/slip incl. 2 pcs. of WL couplers for the ELPLAST+ high-board pier



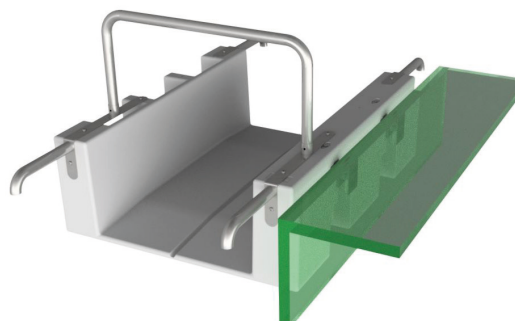
**Fig. 4** Canoe ramp/slip incl. 2 pcs. of universal steel couplers for installation on a stationary pier or berth wall



**Fig. 5** Canoe ramp/slip assembly with the ELPLAST+ low-board pier using the NL couplers



**Fig. 6** Canoe ramp/slip assembly with the ELPLAST+ high-board pier using the WL couplers



**Fig. 7** Canoe ramp/slip assembly with the universal steel couplers for installation on a stationary pier or berth wall



ul. Niepodległości 8  
44-336 Jastrzębie-Zdrój  
elplast@elplastplus.pl

Marzena Kern – Michalczuk  
Phone +48 502 686 337